

**WELCOME TO
YEAR 1**

ROOM 18 - Mrs Debbie Fox



ROOM 21 - Mrs Anna Wylie



Room 20 - Ms Terri Cochrane



OUR CLASSROOM
OPENS AT
8:30 AM

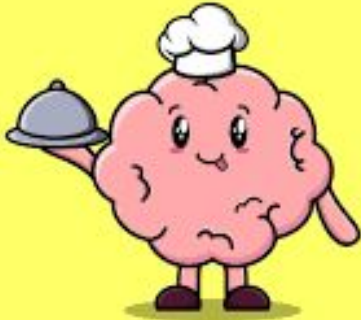


MORNING JOBS

1. Children to unpack school bag - put away sneaky snack, book bag, and drink bottle.
2. Play outside - welcome inside after 8:30

We encourage student independence.

SNEAKY SNACK



Small healthy snack in a
separate container
at around 10am

LUNCH ORDERS



Ordered Lunch Options: EZ lunch and Subway are available to order online. These meals don't arrive until lunch time so please pack morning tea for your child.

We are trying to reuse waste by encouraging nude lunchboxes.

NO NUTS PLEASE!

LIBRARY DAY



Rm 18 - Monday

Rm 20 - Monday

Rm 21 - Tuesday

PICK UP



- Pick up at 3pm from the bottom of the stairs. Your child will let their teacher know when they see their adult.
- Please communicate with the office if there are any changes to arrangements

SWIMMING DAYS

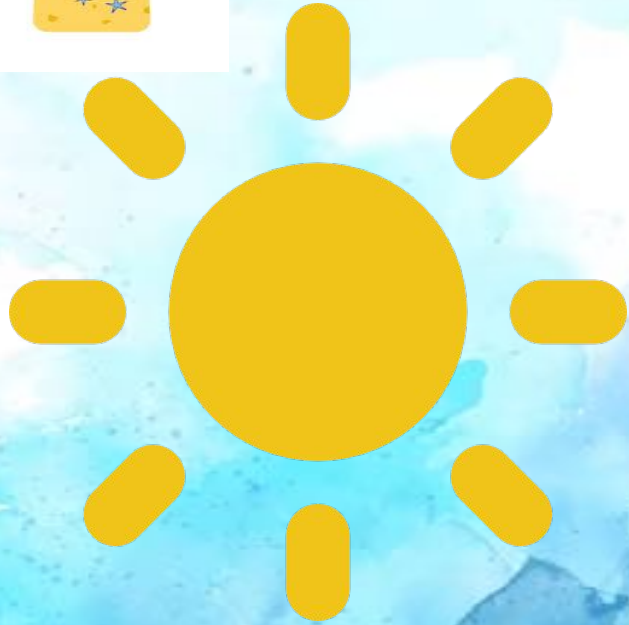


Wednesday & Thursday

Students will need to come to school prepared with their **togs, towel, cap and goggles**. We also have lunch time swims available Tuesday-Friday if your child would like to take part.

It is helpful if your child can dress themselves independently.

SUN SAFETY



Please ensure your child comes to school with a water bottle for the classroom and NAMED a brimmed hat. Hats are compulsory in Terms 1 & 4.

Please apply sunblock before school. We have sunblock in the classroom available to use as well.

HERO



- Make sure you have the Hero App and are signed in on your devices
- Allow notifications
- All notices come through here

EMAILS



Teachers will respond to emails as soon as they are able to.

- dfox@ponsprim.school.nz
- awylie@ponsprim.school.nz
- tcochrane@ponsprim.school.nz

Team Leader

- khamilton@ponsprim.school.nz



MATHS



AT SCHOOL

- Oxford Maths
- Ongoing Professional Development with recent curriculum changes

AT HOME

- Find numbers and shapes around your house and neighbourhood.
- Count collections of objects.
- Practise counting forwards and backwards
- Days of the week/calendars/time
- Games eg Snakes and Ladders, Snap, Uno, Go Fish



LITERACY



AT SCHOOL

- Structured Literacy - iDeaL programme.
- Learning alphabet sounds/names.
- Reading books to children
- Handwriting - letter formations.
- Moving into early writing.

AT HOME

- Reading to your child.
- Audio books
- Writing card, signs, labelling pictures, making mini books.



INQUIRY



Term 1: *Ko wai au? Who am I?*

- Developing a class treaty.
- Learning our own pepeha.

Term 2: *What is Science?*

Term 3: *How do we express ourselves?*

Term 4: *How can we help our school and community?*

HOMework



Starting Week 3:

Monday - Thursday: A reading passage, spelling words and a maths activity will come home each week. Please return each Friday.

Friday - Poetry books will come home. Please read and enjoy these poems with your children and return them on Monday.

Pick a time that suits you and your child for homework.

UPCOMING EVENTS



For all upcoming events and up to date information, please refer to the Ponsonby Primary weekly pushout newsletter and our school calendar accessible on our school website. www.ponsprim.school.nz

Make sure your details are correct and up to date so you don't miss out on any communications.

- Parent Teacher Interviews - Mon/Tues 2nd/3rd March
- Swimming Carnival - Thursday 1st April 1:30pm
- Colour Run - Sunday 29th March (see QR code)

ANY QUESTIONS



THANK YOU!